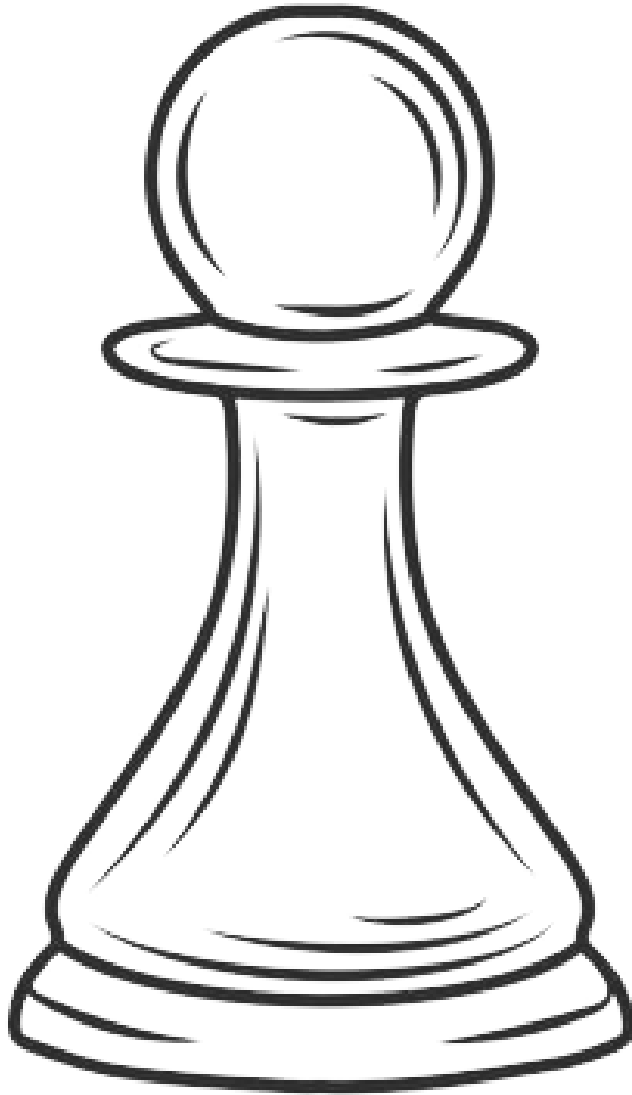


# Chess Coloring Sheet

Name \_\_\_\_\_

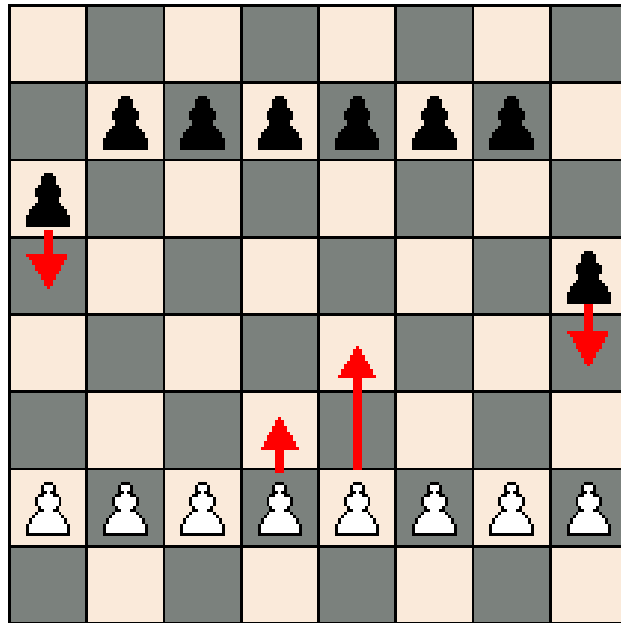
Date \_\_\_\_\_



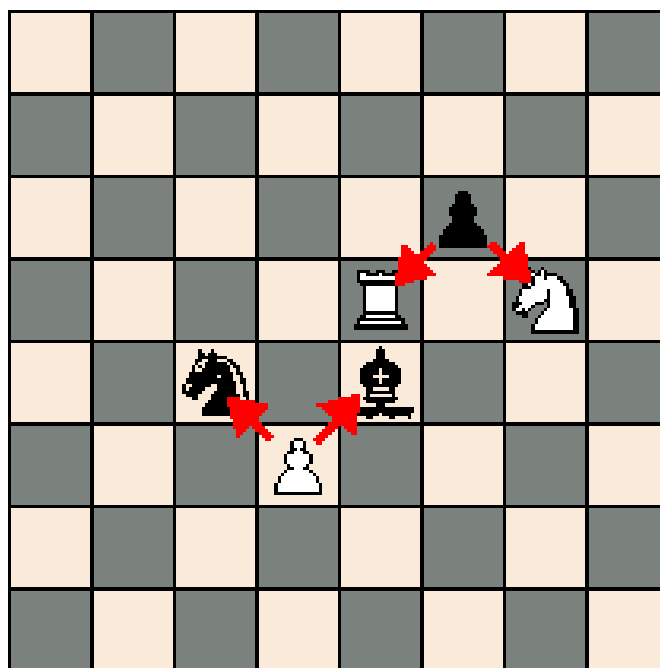
# PAWN



# Rules of the Pawns



Pawns move **forward** 1 or 2 squares if they haven't moved yet. Pawns move 1 square after their 1st move.

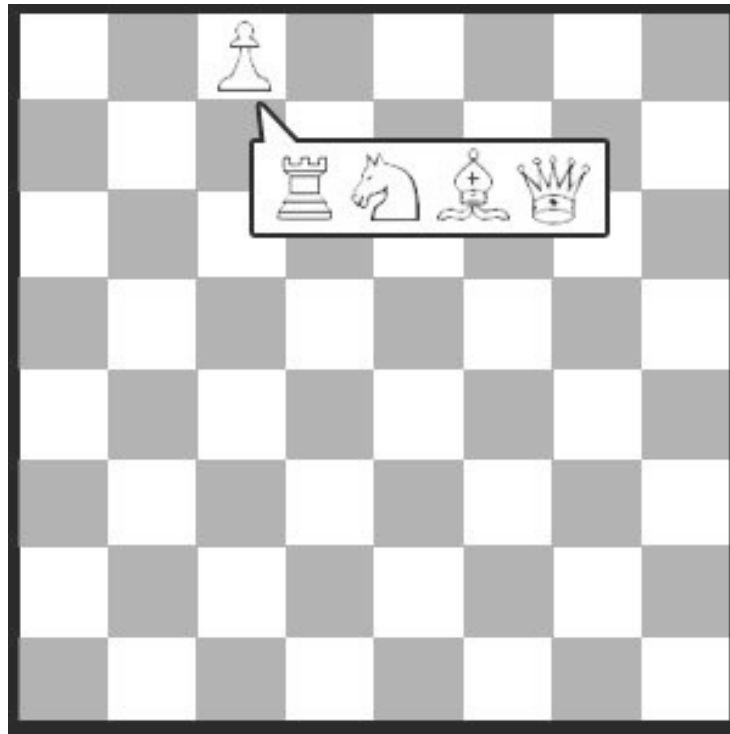


Pawns capture **diagonally**!



# Rules of the Pawns

## Promotion



When a Pawn reaches the opposite side of the board, it can change into a Rook, Bishop, Knight, or Queen. This is called ***promotion***

